



# Maritime Security Threat Alert

## Indonesia Ocean Justice Initiative

Date	2023-01-17 10:00 WIB (UTC+7)
Incident	Illegal Unreported Unregulated Fishing
Data Sources	AIS (Marine Traffic)
Timeliness	Near Real Time Data
Location	Pacific Ocean, north of Halmahera Island, Indonesia's EEZ

### Alert 1

Title	Chinese Fish Carrier Is Not Broadcasting AIS (Dark Vessel)
Remark	In accordance with Article 31 of Government Regulation No 13/2022, IOJI complies with its obligation to report to the Center of Maritime Security and Safety Information about a fish carrier vessel that is not broadcasting AIS while passing through Indonesia's EEZ. Based on its historical AIS data, Lu Rong Yuan Yu Yun 188 (2449 GT) sailed to Indian Ocean (Arabian Sea) and Pacific Ocean (East of Japan) for transshipment (See Figure 3). According to the Global Fishing Watch detection, this vessel has done 200 loitering and 29 encounters or transshipment between Year 2019 to Year 2022 (See Figure 3). <b>The event in which this vessel going dark by switching off AIS since January 13, 2023 (4 days to date) while in Indonesian waters is unprecedented. Therefore, this Chinese-flagged fish carrier raise significant concerns about illegal fishing and transshipment activity in the Indonesian EEZ.</b>
Location	Indonesia's EEZ, WPP 716
Pinpoints Coordinates (Source: Marine Traffic AIS)	(1) Vessel Name: <b>LU RONG YUAN YU YUN 188</b> MMSI: <b>412336767</b> IMO: <b>9861287</b> Latest Position Received: 2023-01-13 12:16 UTC (Out of range) <b>Pinpoint Location:</b> Latest Latitude / Longitude: 3.573522° / 128.5192° Speed/Course: 9.2 kn / 165 ° AIS Source: Satellite
Vessel Information:	<b>Vessel Flag:</b> China <b>Authorized By Member/CNCP:</b> China



**IRCS:** BZTG8

**MMSI:** 412336767

**Registration Number:** (LU)CHUAN DENG(JI)(2022)FT-200003

**Port of Registry:** Shidao

**Vessel Type:** FISH CARRIERS AND REEFERS (FO)

**Normal Crew Count:** 30

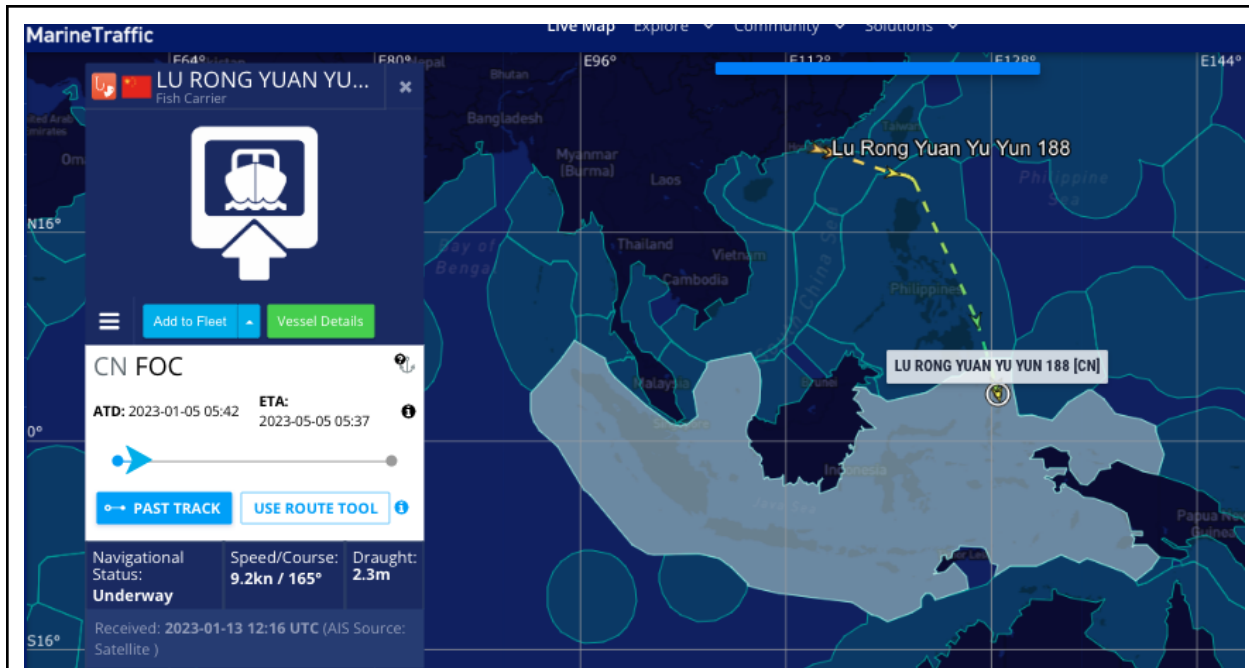
**Vessel Length:** 82.15 meters

**Gross Tonnage:** 2449.0

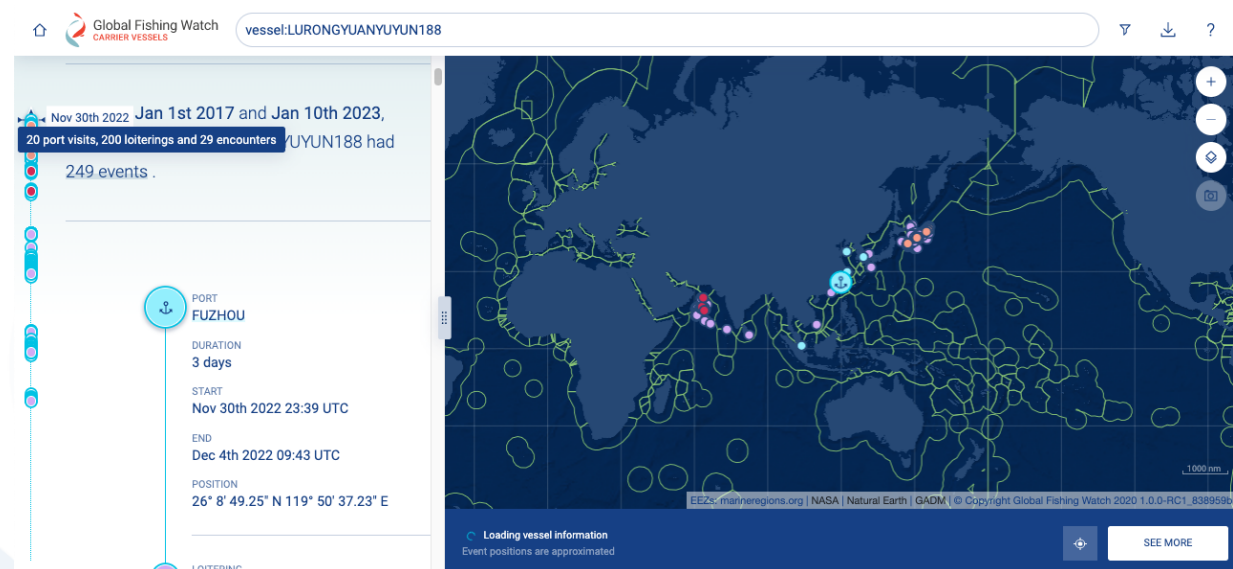
**Photo:**



**Figure 1.** Lu Rong Yuan Yu Yun 188



**Figure 2.** LU RONG YUAN YU YUN 188 Latest Position in Indonesia’s EEZ 2023-01-13 12:16 UTC, in Pacific Ocean, North of Halmahera Island. Source: Marine Traffic.



**Figure 3.** Lu Rong Yuan Yu Yun 188 Port Visits and Potential Transshipment Events (2019-2022). Source: Global Fishing Watch Carrier Portal.

**Contact:**

1. Imam Prakoso ([imam@oceanjusticeinitiative.or](mailto:imam@oceanjusticeinitiative.or))
2. Andreas Aditya Salim ([adityas@oceanjusticeinitiative.org](mailto:adityas@oceanjusticeinitiative.org))