



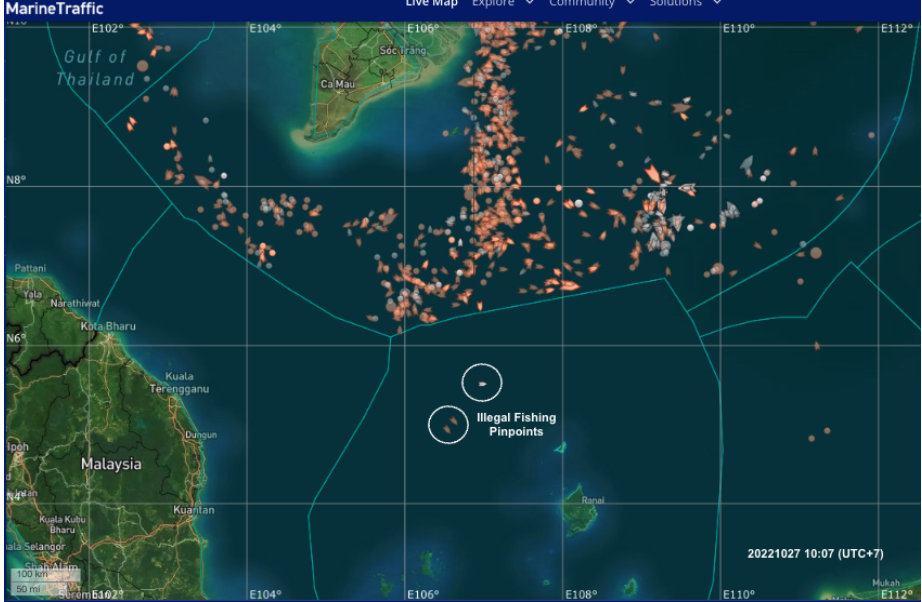
Maritime Security Threat Alert

Indonesia Ocean Justice Initiative

Date	2022-10-27 10:05 WIB (UTC+7)
Incident	Illegal Unreported Unregulated Fishing
Data Sources	AIS (Marine Traffic)
Timeliness	Near Real Time Data
Location	The North Natuna Sea

Alert 1

Title	Illegal Fishing by Vietnamese Boats in The North Natuna Sea, Indonesian EEZ
Remark	<p>In accordance with Article 31 of Government Regulation No 13/2022, IOJI undertakes its obligation to report an incursion by Vietnamese-flagged fishing vessels (repeated offenders) in the North Natuna Sea in Indonesia's undisputed EEZ to the Center of Maritime Security and Safety Information. IOJI also analyzes a pattern of many dark fishing vessels with no AIS operation in the vicinity of areas where fishing vessels are detected by AIS.</p> <p>Note: EEZ maritime border is the EEZ based on Continental Shelf Limit that was agreed by Indonesia and Vietnam in 2003.</p>
Location	Indonesia's EEZ, The North Natuna Sea, WPP 711

<p>Pinpoints</p>	 <p>Figure 1. Illegal fishing pinpoints in non-disputed Indonesia’s EEZ (2022-10-27). All vessels in this figure are filtered by MMSI with prefix 574 (Vietnam) and vessel type Fishing & Unspecified.</p>
<p>Illegal Fishing Pinpoints Coordinates (Source: Marine Traffic AIS)</p>	<p>(1) Vessel Name: 79 B18 MMSI: 574101001 Position Received: 2022-10-27 01:22 UTC Vessel's Local Time: 2022-10-27 09:22 (UTC +7) Area: INDO - Riau Archipelago Current Port: - Latitude / Longitude: 4.931997° / 106.5425° Status: Class B Speed/Course: 2.5 kn / 144 ° AIS Source: Satellite</p> <p>(2) Vessel Name: 6778P18 MMSI: 574568026 Position Received: 2022-10-26 17:42 UTC Vessel's Local Time: 2022-10-27 01:42 (UTC +7) Area: INDO - Riau Archipelago Current Port: - Latitude / Longitude: 5.036785° / 106.6307° Status: Underway Speed/Course: 2.0 kn / 138 ° AIS Source: Satellite</p> <p>(3) Vessel Name: HAI LNOI C35 P4 40 MMSI: 574060275</p>

Position Received: 2022-10-27 03:10 UTC
Vessel's Local Time: 2022-10-27 10:10 (UTC +7)
Area: INDO - Riau Archipelago
Latitude / Longitude: 5.501797° / 106.9947°
Status: Class B
Speed/Course: 0.7 kn / 103 °
AIS Source: Satellite

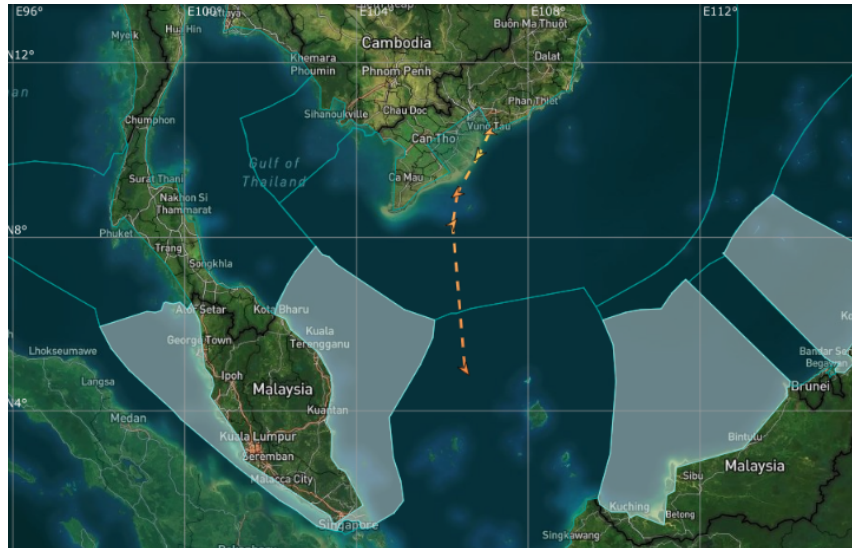


Figure 2. 79 B 18 vessel track 15 - 27 October 2022 (Source: Marine Traffic)

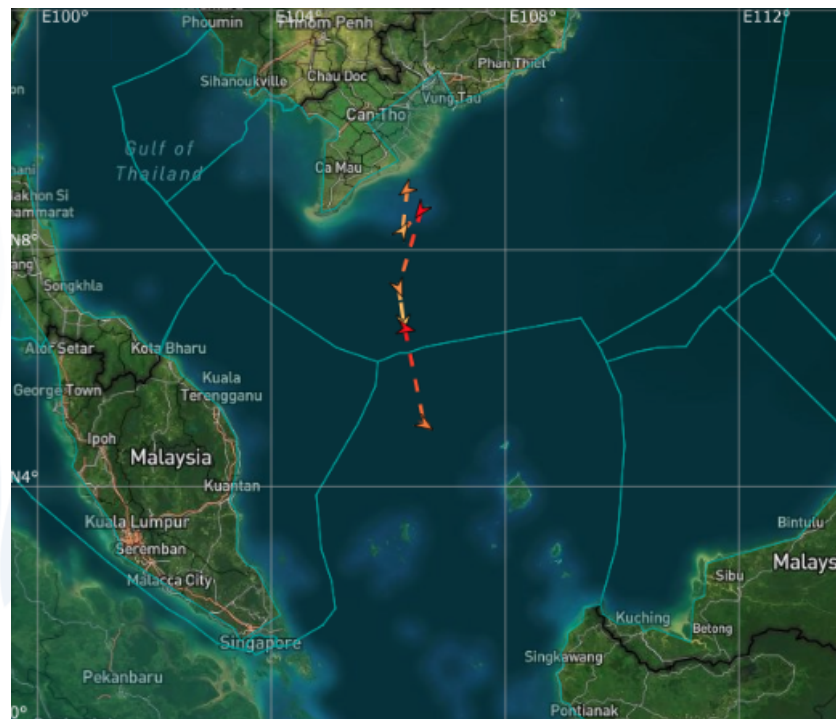
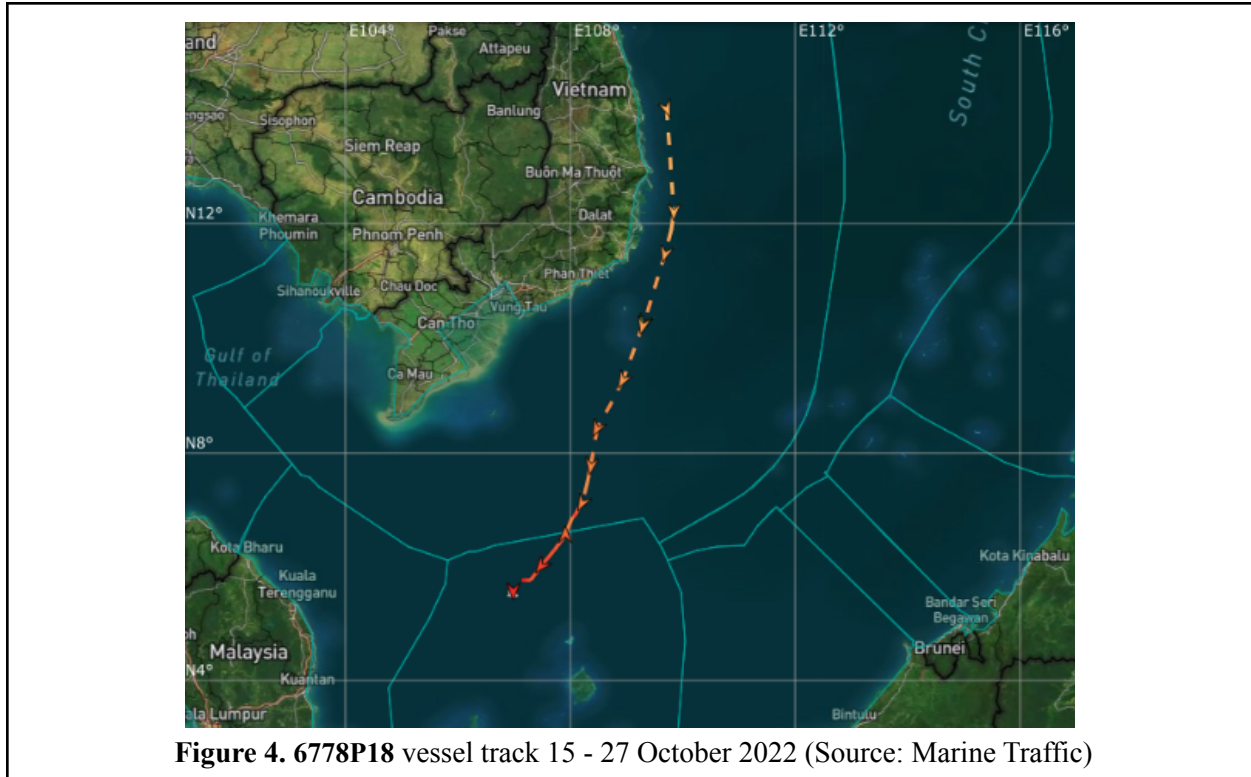


Figure 3. HAI LNOI C35 P4 40 vessel track 16 - 27 October 2022 (Source: Marine Traffic)



Contact:

1. Imam Prakoso (imam@oceanjusticeinitiative.org)
2. Jeremia Humolong Prasetya (jeremiahp@oceanjusticeinitiative.org)